

**Handeling , Installation , Operation and  
Maintenance instructions for  
D-060 HF NS Combination Air Valves Non Slam**



**A. Installing and Operating the D060 HF-NS  
Air valve**

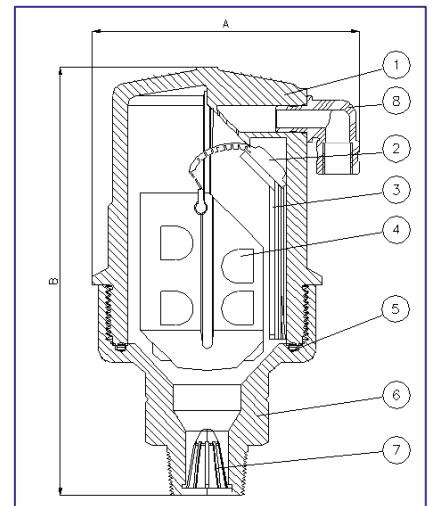
- B.1. The air valve will be mounted on a riser, connected to the **top** of the pipe.
- B.2. An isolating valve will be installed below the air valve.
- B.3. Flush the system before installing the air valve to avoid any dirt or sharp objects getting into the air valve.
- B.4. Lift the air valve from the lifting ring by a hoke place it carfully on the rubber seal over the shut-off valve.
- B.5. **Use washers** below each bolt & nut that connects the air valve's flange to the shut-off valve below.
- B.6. The bolts and nuts should be tighten simultanicly (one Against the other (opposite to him)).  
The closure tightness of bolts and nuts shall be according to the standard (Torque) for the bolts and nuts dimention is used .  
Please use ring ranch keys (to be operated by hand) for closing and opening all bolts of the air valve (inclu. The bolts at the flage).



## **B. Maintening the D060 HF-NS Air valve**

### **C.1. Maintening the Automatic air valve.**

- C.1.1. Shutoff the isolating valve below the air valve.
- C.1.2. Unscrew the body (1) of the Automatic air valve (No.22 drawing no. 5292-00-02) from the Base (make sure that the base will not rotate!).
- C.1.3. Remove the Clamping Stem (3) and the float (4) from the automatic component and wash the inside of the body, the Clamping Stem, the float, and the Rolling Seal (2), with clean water.
- C.1.4. Check to make sure that the Rolling Seal is unharmed (not torn or cracked) and is located precisely in the middle of its groove in the float.
- C.1.5. Reassemble the air valve in the opposite order:  
First insert half the length of the roaling seal tail into the track (grrove) in the body, then push the rest of the way to the end of the groove , using the clamp. Make sure that the roalling seal is set and hold inits place.



## **C.2 Maintening the Kinetic air valve.**

- C.2.1. Unscrew the bolts (8) that connect the valve cover (2) to its body (1).
- C.2.2. Clean the internals of the following parts part :  
the body including the groove of the Oring , the screen, the float and the cover with clean water in order to remove coarse grime or accumulated scale.
- C.2.3. Check that the nozzle seal (4) is in a good shap , means that is not torn and/or not cracked.
- C.2..4. In case that the nozzle seal is in a bad condition, please Remove the nozzle seat + seal (3+4) witout harming the coating, than clean carefully the cover seat of the reamined glue, rub into the seat Epoxy glue and push the nozzle seat and seal into the its place in the cover. Wait for minimum 24 hours for the glue to get dried completely.
- C.2.5. Reassemble the air valve in the opposite order:  
insert the float, than place the Oring in the groove, place the cover on the body, insert the botls , the washers and the screw the nuts and the washers on the nuts.
- C.2..6. The bolts and nuts should be tighten simultanicy (one against the other opposite to him).  
The closure tightness of bolts and nuts shall be according to the standard (Torque) for the bolts and nuts dimention is used .  
Please use ring ranch keys (to be operated by hand) for closing and opening all bolts of the air valve.



### **C.3 Maintening the Anti-Shock element.**

- C.3..1. Please check (through the cover) that the flap (18) moves Freely without any distturb in the falp house (17).
- C.3.2. In case that the flap does not move freely in the flap house, Please act as follows:
- C.3.3. Unscrew the four domed nuts (12) , take of the screen Cover (6) and the screen (7).
- C.3.4. Unscrew the nuts (13) of the four threaded rods.
- C.3..5.Take of the ring K060NS.
- C.3.6. Pull out the flap of the house.
- C.3.7. Clean the flap house and the flap in order to remove coarse grime or accumulated scale.
- C.3.8. Reassemble the Anti- Shock element in the opposite order: insert the flap into the flap house, than place the ring K060HF-NS through the threade rods , screw the nuts on the four threade rods and close it tightly. Place the screen over the K060HF-NS ring , than screw the nuts on the four threade rods .  
Place the screen cover over the nuts , add the four domed nuts over the screen cover and close it tightly to the screen cover.

